



Darter House, Anax Street

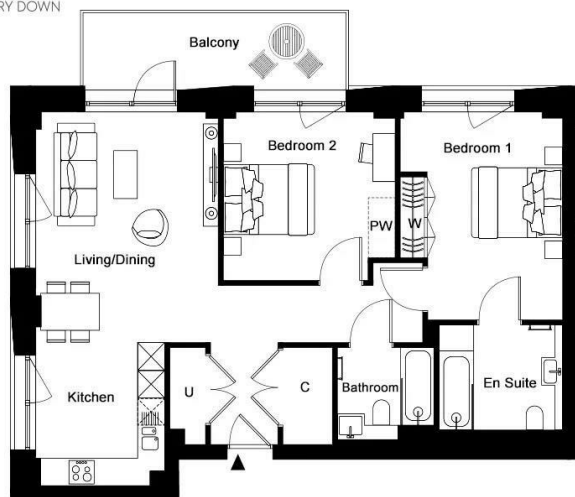
, LONDON N4 2UE

- Two-bedroom, two-bathroom apartment
- Contemporary kitchen fully fitted with integrated appliances
- Landscaped communal gardens
- Ideally located close to Manor House Station (Piccadilly Line)
- CTB-D
- Bright open-plan reception and dining area
- Concierge service
- Secure entry system and lift access
- EPC-B

£3,500 Per Month



Local Authority **Hackney**
 Council Tax Band **D**
 EPC Rating



Woodberry Down, Editions - Darter Apartments, Property B1.05.01, Fifth Floor

Dimensions

Kitchen	9' 5" x 10' 2"	2.86m x 3.11m
Living / Dining	13' 4" x 16' 4"	4.05m x 5.00m
Bedroom 1	11' 10" x 14' 9"	3.60m x 4.50m
Bedroom 2	12' 6" x 11' 11"	3.80m x 3.65m
Balcony	105 sq.ft	9.8 sq.m
Total Area	929 sq.ft	86.3 sq.m

Key

- C Cupboard
- PW Provisional Wardrobe
- U Utility
- W Wardrobe



London Office Office
 Spaces Victoria, 25 Wilton Road, Pimlico,
 London, SW1V 1LW

Contact
 020 3084 3094
 XL@londonvictoriagroups.co.uk
 www.londonvictoriagroups.co.uk

Agents Note: Whilst every care has been taken to prepare these particulars, they are for guidance purposes only. All measurements are approximate and for general guidance purposes only and whilst every care has been taken to ensure accuracy, they should not be relied upon and potential buyers/tenants are advised to recheck the measurements.

